

ANNUAL REPORT



2021-2022

Excellence in Education

Table of Contents

1 Introduction

2 Board of Directors & Staff

3 Message from the Executive Director

4 Member Districts

5-6 Member District Data

7-10 Services & Technical Assistance - Member Districts

11 Professional Development Snapshot

12-13 2021-2022 Highlights

14 Services & Technical Assistance - Statewide

15-16 Fiscal Overview

17 Procurement



Introduction

High Plains Regional Education Cooperative (HPREC), located in Raton, New Mexico, is one of ten regional education cooperatives throughout the state. HPREC is a New Mexico State agency, administratively attached to the Public Education Department (New Mexico Statute Article 2B– 22– 2B–1 to 22–2B–5).

HPREC's role is to augment and accelerate the efforts of its eight member school districts by providing quality support and services, in response to current school needs and initiatives. This is done with a cooperative system of sharing services and leveraging programs.

Mission

Our mission is to research and implement sound educational practices in order to be responsive to client needs. We do this by engaging in research-based practices, developing relationships, and implementing systems to transform education. We do this so that all our schools are successful.

Vision

We envision a collaborative culture where people are valued and encouraged to grow professionally in a positive working environment, which fosters innovation in a progressive attempt to transform education and provides our schools with high quality, research-based educational opportunities to improve outcomes.

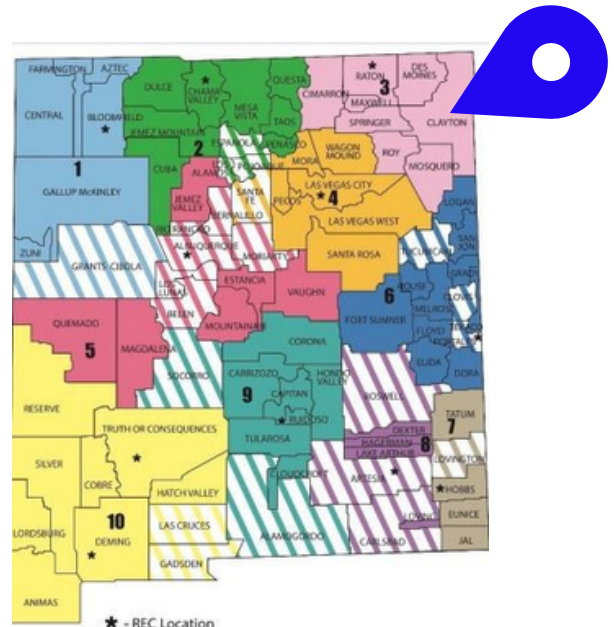
Location

101 North 2nd Street
Raton, NM 87740
Phone - 575-445-7090
FAX - 575-445-7663
www.hprec.com

NMRECA

The New Mexico Regional Education Cooperatives Association (NMRECA) is comprised of ten regional education cooperatives. We are located throughout New Mexico, supporting 68 districts (most of them rural), charter schools, and state-supported schools. In addition, NMRECA members work directly with the New Mexico Public Education Department on state-wide projects and initiatives.

Learn more about the NMRECA by visiting our website: www.nmreca.org



Board of Directors

High Plains Regional Education Cooperative is governed by an eight-member board which consists of the superintendent from each member district. The superintendents meet regularly to provide guidance and expertise to the Executive Director. The strength of HPREC lies in the collaborative and supportive construct of the organization.

The public is invited to attend HPREC Board of Directors' meetings. Meeting times, agendas, and minutes can be found on our [website](#).

President - Kodi Sumpter, Des Moines Municipal Schools

Vice-President - Adan Estrada, Cimarron Municipal Schools

Secretary - Kristie Medina, Raton Public Schools

Member - Ray Maestas, Clayton Municipal Schools

Member - Amy Roble, Maxwell Municipal Schools

Member - Johnna Bruhn, Mosquero Municipal Schools

Member - Kamau Turner, Roy Municipal Schools

Member - Julie Crum, Springer Municipal Schools

HPREC Staff

Executive Director - [R. Stephen Aguirre](#)

Business Manager - [Mary Lisa Gonzales](#)

Program Manager - [Marisa Aguirre](#)

Business and Program Support/CPO - [Brandon Hightree](#)

Administrative Assistant - [Emy Carlini](#)

Procurement Consultant - [Gary Gabriele](#)

Program Specialist/Dossier Reviewer - [Pamela Hunnicutt](#)

Licensed Clinical Social Worker - [Jill Fernandez](#)

Transition Counselor - Katy Marchiondo

Special Education Consultant - [Pepper Skodack](#)

IT Contractor - Richard Nunez



Message from the Executive Director

It is my pleasure to share the Annual Report for High Plains Regional Education Cooperative (HPREC). 2021-2022 marks my twenty-fourth year in the role of Executive Director at High Plains REC. It continues to be my honor to be a member of this team of dedicated educators throughout our region.

Over the years, there have been many changes in our work, roles, and responsibilities, but none as challenging as those defined by the pandemic. As with everyone, the demands for adaptations, responses, and solutions came unexpectedly. However, I'm proud to share that HPREC continues to embrace the challenges with resiliency and commitment, on behalf of the students and staff in member districts.

HPREC's leadership and innovation are timely in meeting the needs of students and staff in the Cimarron, Clayton, Des Moines, Maxwell, Mosquero, Raton, Roy, and Springer School Districts. Collective and collaborative initiatives and projects provided by HPREC are critical to our small and rural districts.

HPREC provides expertise, technical assistance, and systematic approaches to our member districts to increase student learning outcomes. We support efforts and identify resources to address all student needs, with a focus on the at-risk student population, graduation rates, and college and career readiness.

Recognizing the many fiscal challenges in public education, HPREC engages in entrepreneurial activities to ensure financial stability. Sound business practices including pre-bid contracts, an annual SPED law conference, and the facilitation and coordination of statewide professional development via the IGA process, are examples of HPREC's commitment to fiscal solvency.

As always, there is a tremendous amount of positive momentum within HPREC and its member districts, building on our 36 year history and reputation of quality and professionalism. I invite you to learn more about HPREC's 21-22 projects and accomplishments, as detailed in this annual report.

Respectfully,

R Stephen Aguirre

Funding

Each REC in the state receives an annual legislative allocation of \$110,000. To maintain financial solvency, HPREC primarily relies on innovative and successful entrepreneurial activities.

HPREC does not charge a fee to member districts.

0 %

member district fees
charged

Member District Contact Information

District	Superintendent	Website
Cimarron Municipal Schools	Adan Estrada	www.cimarronschools.org
Clayton Municipal Schools	Ray Maestas	www.claytonschools.us
Des Moines Municipal Schools	Kodi Sumpter	www.desmoines.k12.nm.us
Maxwell Municipal Schools	Amy Roble	www.maxwellpl2.com
Mosquero Municipal Schools	Johnna Bruhn	www.mosquero.net
Raton Public Schools	Kristie Medina	www.ratonschools.com
Roy Municipal Schools	Kamau Turner	www.royschools.org
Springer Municipal Schools	Julie Crum	www.springerschools.org

4-Year Graduation Rate by District*

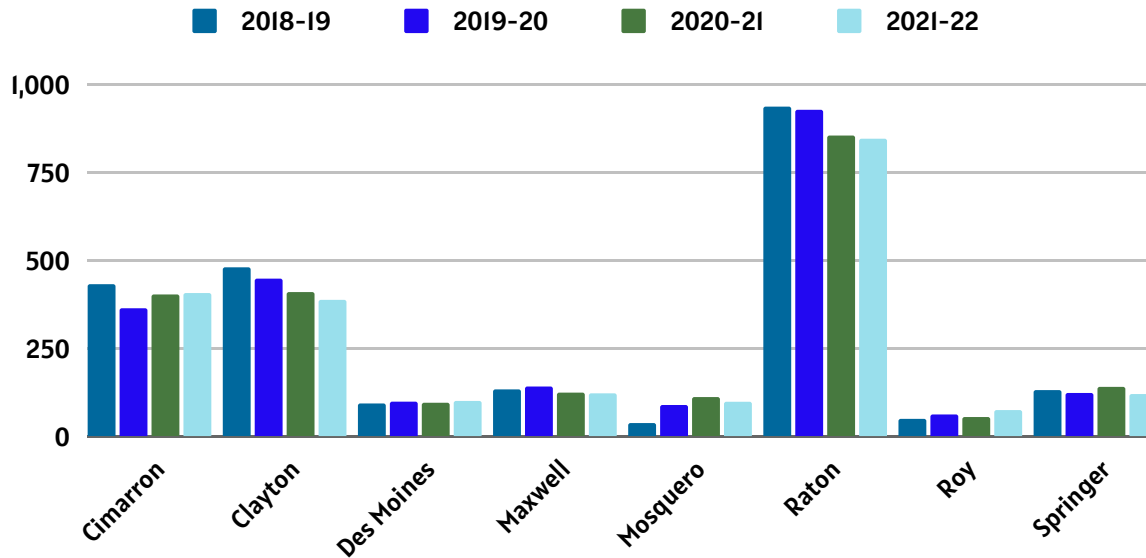
District	2018	2019	2020	2021
Cimarron	81.2%	81.5%	70.8%	91.4%
Clayton	74.1%	-	87.2%	75.0%
Des Moines	-	-	-	≥ 95%
Maxwell	-	-	-	90.0%
Mosquero	-	-	93.0%	≥ 95%
Raton	67.5%	79.4%	84.5%	74.8%
Roy	-	-	-	73.3%
Springer	100%	-	92.6%	≥ 95%
Statewide	73.9%	74.9%	76.9%	76.8%

*2021 NMPED Graduation Data

Member District Data

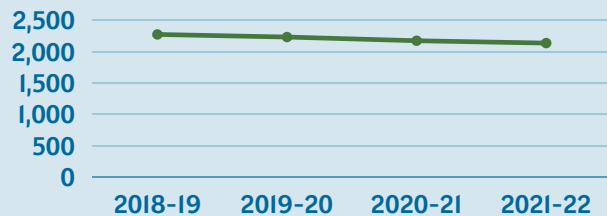
Student Enrollment by District 2018-2021*

District	2018-19	2019-20	2020-21	2021-22
Cimarron	429	361	400	404
Clayton	477	445	407	385
Des Moines	90	95	92	97
Maxwell	130	138	121	119
Mosquero	36	86	108	95
Raton	934	925	852	843
Roy	47	59	52	71
Springer	128	120	137	117
Total	2271	2229	2169	2131



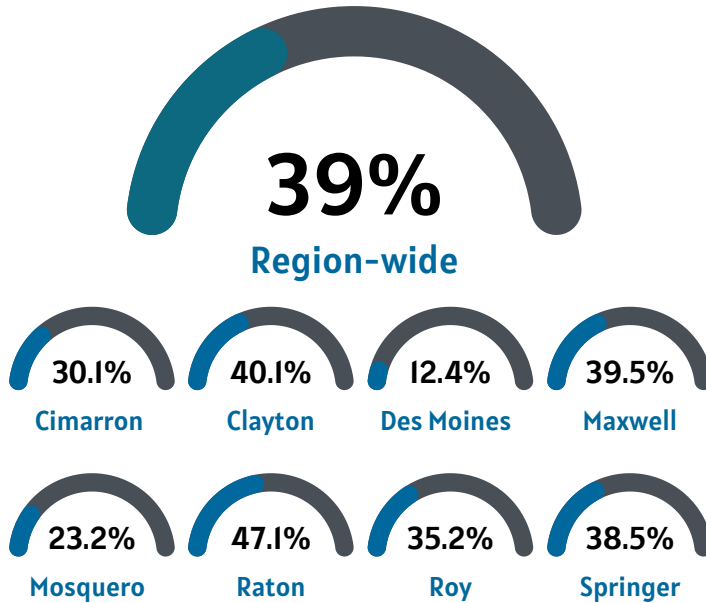
6%

decrease in region-wide
enrollment over four year span

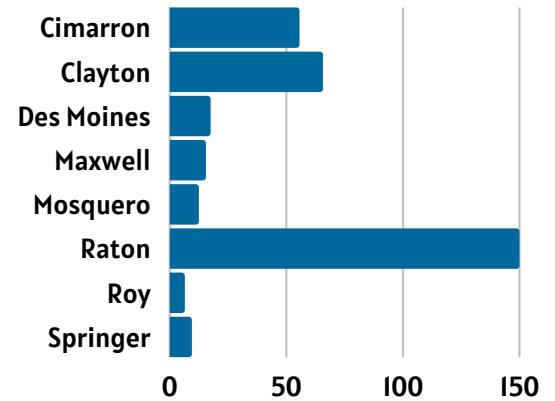


Member District Data (continued)

Percent Economically Disadvantaged*



Students with Disabilities - Enrollment*



Number/Percent of Students Qualifying for Free/Reduced Lunch (FRL)*

District	Total FRL Students	Percent FRL Students
Cimarron	236	58.4%
Clayton	251	65.2%
Des Moines	35	36.1%
Maxwell**	119	100%
Mosquero	43	45.3%
Raton**	843	100%
Roy	35	49.3%
Springer**	117	100%
Region	1679	58.4%

*2021-2022 40 Day Count STARS Data as Reported by NMPED

**Community Eligibility Program (CEP) Recipient

Services & Technical Assistance – Member Districts

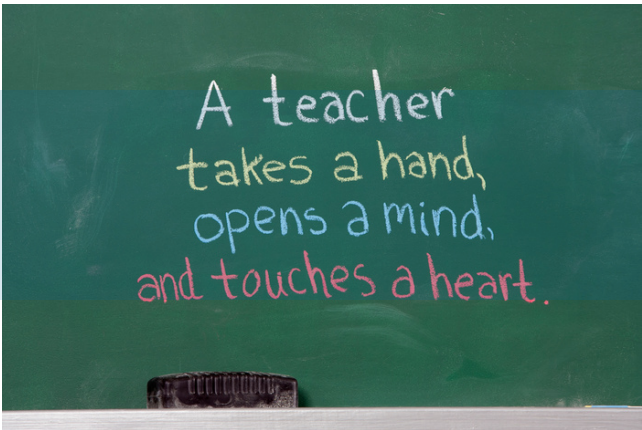
HPREC works closely with its member districts to provide and/or facilitate support and technical assistance in accordance with, and pursuant to, the Joint Powers Agreement, to assist districts in achieving their goals. See below for a sampling of 2021–2022 supports.

Crisis Prevention Institute	HPREC staff (LCSW) provides ongoing training and recertification to staff across the region in Crisis Prevention Intervention (CPI). (The LCSW is CPI certified and is also available for consultation and assistance in the design of safety teams and safety plans.) HPREC also provides CPI materials and online resources.
Community Outreach	HPREC hosts member districts, community groups, partner RECs, and various other organizations with interests in education and community development. Available facilities include two training rooms (one that accommodates up to 12 and another that can accommodate up to 50).
Dossier Support	Dossier support is available to teachers throughout the dossier design and submission process. Coaching includes helpful tips and ongoing discussion about completeness and thoroughness of each strand.
Instructional Resources	HPREC provides instructional resources to districts, upon request. Examples include those that address secondary literacy (Achieve3000) and K–6 reading and math (Curriculum Associates i-Ready).
Multi-Layered System of Support (MLSS)	In response to NMPED guidance, HPREC provides expertise and support to our districts during the transition from RTI to MLSS. Teams from throughout the region meet regularly with the MLSS coach, assuring that information is received and that timelines are met.
Professional Learning Communities	Leaders from throughout the region have spearheaded the reorganization of the Professional Learning Communities initiative. HPREC assists with the facilitation of team meetings and by providing resources, including access to HPREC's subscription to Solution Tree.

Services & Technical Assistance - Member Districts (continued)

HPREC works closely with its member districts to provide and/or facilitate support and technical assistance in accordance with, and pursuant to, the Joint Powers Agreement, to assist districts in achieving their goals. See below for 2021-2022 supports.

Positive Behavior Intervention Support (PBIS)	HPREC staff (LCSW) provides professional development in PBIS, a systems-level approach to promote positive behavior and healthy social development in children. The support also includes the purchase of materials and licensing of PBIS Rewards, which is a data tracking resource to monitor the effectiveness of the PBIS implementation.
Student Assistance Team (SAT)	HPREC staff is available to assist with school-level Student Assistance Teams (SAT). This includes process guidance, especially as the NMPED has revised/redesigned form exemplars, for district use.
Technology	The IT team is available to districts for needs assessments, strategic planning, and consultation on all technology related issues.



Services & Technical Assistance – Member Districts – Special Education

HPREC works closely with its member districts to provide and/or facilitate support and technical assistance in accordance with, and pursuant to, the Joint Powers Agreement, to assist districts in achieving their goals. See below for 2021-2022 supports for Special Education.

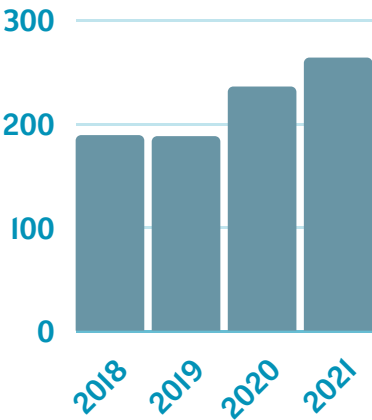
Child Find	HPREC provides assistance with the scheduling, promotion, staffing, and materials to ensure that Child Find events are successful and meet IDEA guidelines.
Consultant	A Special Education consultant is available to provide ongoing support to Special Education Directors, Related Service Providers, and HPREC staff to address goals, activities, measurements, and documentation for IEP students and to ensure compliance with IDEA.
Continuing Education	HPREC coordinates continuing education in the area of Special Education, upon request by district. This includes materials, professional development, and online learning, such as DirectStep for paraprofessionals (LRP).
GoalBook	GoalBook is available to member districts. GoalBook is an online resource that assists related service providers and special education personnel in developing meaningful and robust IEP goals that are directly aligned with the CCSS.
LRP Publications	LRP Publications (Special Education Connections) is available to member district staff. This valuable web-based resource provides access to an online newsletters that provide the latest in Special Education legal matters and trends.
Medicaid School Based Services (MSBS)	HPREC coordinates and oversees the MSBS program for member districts, overseeing both the direct billing and the administrative claim process.
PowerSchool Special Programs (PSSP)	PowerSchool Special Programs is available as the IEP system for the region. RTI, 504, and Service Capture modules are integrated in the system. HPREC staff provides technical and content expertise, along with ensuring system access and monitoring upgrades.

Services & Technical Assistance - Member Districts - Special Education (continued)

HPREC works closely with its member districts to provide and/or facilitate support and technical assistance in accordance with, and pursuant to, the Joint Powers Agreement, to assist districts in achieving their goals. See below for 2021-2022 supports for Special Education.

Related Service Providers	HPREC employs and contracts with Related Service Providers, as availability permits. In addition, HPREC assists districts with their RSP employees and contractors, providing testing materials upon request and training on appropriate service documentation.
Walsh-Gallegos Law Firm	HPREC coordinates monthly roundtables with the Walsh-Gallegos Law Firm, centered on hot topics in Special Education. In addition, HPREC works with the law firm to provide annual updated policies and procedures and professional development, as identified.

Special Education Law Conference



Year	Attendance
2018	190
2019	190
2020	240
2021	260

16

consecutive years of delivery

Each year, HPREC presents the Special Education Law Conference. 2021 was the 16th consecutive year, with the last three years held remotely, due to the pandemic.

Presenters are from the Walsh-Gallegos Law Firm. The attorneys are highly knowledgeable and respected experts in the field of special education law.

Designed for New Mexico school districts and charter schools, the topics cover the most up-to-date and accurate information regarding IDEA 2004 and issues related to case law, practical compliance strategies, and trends in litigation.

Professional Development

HPREC conducts and facilitates professional development activities that positively impact hundreds of administrators, teachers, support staff, and students in New Mexico each year. Much of the professional development is provided through IGAs with the NMPED; others are specific to HPREC. All professional development activities are designed to build capacity and expertise at the local level through workshops, as well as ongoing coaching, mentoring, and technical assistance. The goal is to increase educator effectiveness and student achievement. Here is a sampling of the focus areas relating to the professional development delivered during 2021-2022:

-
- Bilingual and Multicultural Education
 - Bus Driver Training
 - Business Software (Visions)
 - College and Career Readiness
 - Common Core State Standards
 - Crisis Prevention Intervention
 - Critical Thinking
 - Cultural Responsiveness
 - Data-Based Decision Making
 - Dossier Support
 - Instructional Materials
 - Instructional Strategies & Teacher Effectiveness
 - Leadership
 - Literacy
 - Mathematics & Science
 - Medicaid School Based Services
 - Non-Violent Crisis Intervention
 - Paraprofessionals (Continuing Education)
 - Policy Development & Review
 - Positive Behavior Intervention Support
 - PowerSchool Special Programs
 - Professional Learning Communities
 - Response to Intervention
 - Short Cycle Assessments
 - Social & Emotional Learning
 - Special Education Law/Compliance
 - State Performance Plan Indicators
 - Student Assistance Teams
 - Technology

Highlights



Instructional Material - ELA

HPREC was pleased to assist member districts with the ELA textbook adoption process. The project was facilitated by staff from Cooperative Education Services (CES). Teams followed a best practice protocol in order to review and select materials that best fit the needs and diversity of their student populations. Meetings were held both remotely and in-person, including representation from publishers.



FIPSE Federal Grant - Year 2

Year 2 updates:

- Continued development of the Pathway2Careers (P2C) career-focused math curriculum (Pre-Algebra, Algebra I, and Geometry)
- Online modules and recorded interviews featuring 50 of the top occupations represented the voices within NM

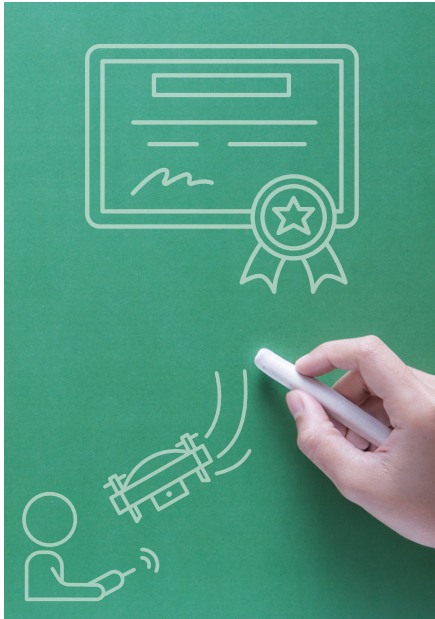


Region-Wide Professional Learning Collaboration Organization

Leaders from throughout member districts reignited region-wide Professional Learning Communities (PLCs). The planning process began in 2021 and is facilitated by the MLSS coordinator, who has extensive experience in leadership and PLCs. A region-wide kickoff event is planned in the fall of 2022.

Excellence in Education

Highlights (continued)



NextGen CTE & Carl Perkins Grants

Program offerings were in the areas of Wind Energy, Mixed Construction Trades, and FAA Unmanned Drone Pilot with partners Mesalands Community College, New Mexico Construction Building Trades and Del Sol Aviation. Below are some highlights of the programs:

- FAA Unmanned Drone Pilot Certification - 24 students received their FAA industry certification and drones
- Mixed Construction Trades - 10 students received industry recognized certifications in OSHA 10 and First Aid/CPR
- Wind Energy - 10 students participated in the spring and will continue this fall to obtain their industry recognized International Renewable Energy Technician certificates

*Augmented Reality Welding Systems were rotated throughout consortium district classrooms in New Mexico Workforce Region C

Summer K-6 Reading Program

HPREC provides all K-6 students from throughout the district with summer reading material. Students enjoy the tote that includes five grade-level fiction books and a fun comprehension check. Parents and teachers appreciate the efforts to address summer reading loss.



1055

K-6 summer
reading packages
distributed

Services & Technical Assistance – Statewide

HPREC's work with the New Mexico Public Education Department regarding coordination and facilitation of professional development on a state-wide level continues to grow each year. A broad range of support is outlined in the Inter-Governmental Agreements with NMPED Divisions and Bureaus and includes areas such as contract development, fiscal management, RFPs, and event facilitation.

NMPED – College and Career Readiness Bureau	<ul style="list-style-type: none">• Career Advisement/Counseling• Career Technical Education• Early College High Schools
NMPED – Instructional Material Bureau	<ul style="list-style-type: none">• Summer Review Institute
NMPED – Language and Culture Division	<ul style="list-style-type: none">• Culturally and Linguistically Responsive Teaching and Learning• Equity Council Meetings• Title III• WIDA• World Language Standards
NMPED – Math & Science Bureau	<ul style="list-style-type: none">• OpenSciEd• Focus on Algebra
New Mexico Priority Schools Bureau	<ul style="list-style-type: none">• Regional Support Specialists
New Mexico Special Education Division	<ul style="list-style-type: none">• State Level Activity J (ex, State Performance Plans, Early Learning, Graduation Rates)• State Level Activity M (Educator Evaluation, Common Core)

Fiscal Overview

Support to Member Districts by HPREC Fiscal Department

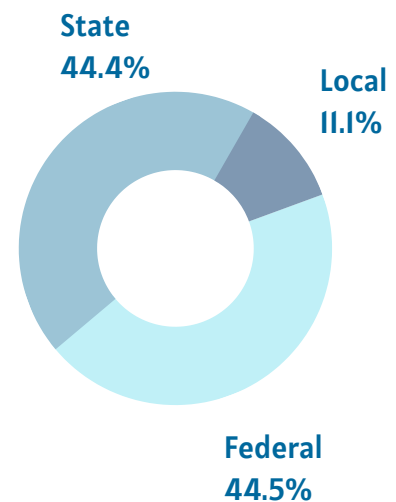
- Training and support of school-based business managers
- Preparation and facilitation of operating budgets
- Administration of budget compliance and accountability
- Responsible for submission of timely reporting
- Financial liaison with the New Mexico Public Education Department

Financial/Operational Highlights 2021-2022

- Ending cash balance of June 30, 2022 - \$3,636,013
- Intergovernmental Receivables - \$1,190,378
- Overall revenue (including transfers in and other sources) - \$11,109,822
- Total expenditures - \$10,702,068
- Net Position - \$2,506,869 increase
- Fund Balance - \$407,754 increase

2021-2022 Governmental Activities Revenue (Audited)

Revenue Source	Amount	Percentage
Federal Sources	\$4,939,266	44.5%
State Sources	\$4,935,330	44.4%
Local Sources	\$1,235,226	11.1%
Total Revenue	\$11,109,822	100%



Fiscal Overview (continued)

2021-2022 Governmental Activities Outlays/Expenditures (Audited)

	Outlays/Expenditures	Amount
Current	Instruction	\$375,807
	Support Services: Students	\$392,706
	Support Services: Instruction	\$8,160,410
	Support Services: General Administration	\$1,532,440
	Support Services: Central Services	\$138,051
	Operation & Maintenance of Plant	\$82,851
	Community Services Operations	\$19,803
Non-Current	Debt Principal	\$0
	Debt Interest	\$0
	Capital Outlay/Other Support Services	\$0
	Total Outlays/Expenditures	\$10,702,068

Summary of Revenue: Governmental Activities (Audited)

Source	2019	2020	2021	2022
Federal Sources	\$284,798	\$769,266	\$2,410,768	\$4,939,266
State Sources	\$4,840,595	\$4,029,060	\$7,192,680	\$4,935,330
Local Sources	\$1,039,226	\$981,714	\$1,614,802	\$1,235,226
Total	\$6,164,619	\$5,780,040	\$11,218,250	\$11,109,822

Procurement – Pre-Bid Contracts

High Plains Regional Education Cooperative #3 is partnered with professional and reputable contractors providing pre-bid contracts for school districts, state agencies, and local public bodies, pursuant to NMSA 1978, 13-1-129, Procurement Under Existing Contracts.

bulb, Inc. – Digital Portfolios 400 East Simpson Street Suite 230 Lafayette, CO 80026 303-522-6972	fbt Architects One Park Square 6501 America's Parkway NE Suite 300 Albuquerque, NM 87110 505-883-5200	Government & Educational Furnishings Company (GEFCO) 7324 Vista de Sobre Dr Las Cruces, NM 88012 575-382-5639	Greer Stafford/ SJCF Architecture & Design 1717 Louisiana Blvd NE Suite 205 Albuquerque, NM 87110 505-821-0235
Hertz Furniture 6821 Fulton Street Houston, TX 77022 817-501-9411	McCain + Yu Architecture & Design 2009 Ridgecrest Dr SE Albuquerque, NM 87108 505-266-2142	Nunex Enterprises PO 592 Santa Teresa, NM 88008 505-207-0955	School Furnishings Unlimited PO Box 14278 Albuquerque, NM 87191 505-797-5179
Security Controls Integration, Inc. 3801 Rutledge Road NE Albuquerque, NM 87109 505-998-1150	STOVEN Construction 2709 Vassar Place NE #F Albuquerque, NM 87107 505-884-7550	Trane, Inc. – HVAC Maintenance & Repair 5501 San Diego Avenue, NE Albuquerque, NM 87113 505-379-9803	University Instructors, Inc. Public Consultant Group 999 18th Street Suite 1425N Denver, CO 80202 804-201-4143
Vigil & Associates Architectural Group 4477 Irving NW Suite A Albuquerque, NM 87114 505-890-5030	Weil Construction, Inc. 3344 Princeton Drive NE Albuquerque, NM 87107 505-889-3535	Woodcraft 6230 N Oracle Road #100 Tucson, AZ 85704 520-742-9663	\$0 cost/fees for districts to utilize pre-bid agreements

15 available vendors for districts in 2021-2022

2% administrative fee on all pre-bid contract usage supports HPREC districts

Next Steps

There are several exciting projects and work ahead for 2022-2023.
We look forward to sharing our progress with you next year.

Thank you for your continued support of High Plains REC and RECs
across the state.



101 North 2nd Street
Raton, NM 87740
Phone - 575-445-7090
FAX - 575-445-7663
www.hprec.com

