

# ANNUAL REPORT



2022-2023

*Excellence in Education*

---

# Table of Contents

**I** Introduction

**2** Board of Directors & Staff

**3** Message from the Executive Director

**4** Member Districts

**5-6** Member District Data

**7-10** Services & Technical Assistance - Member Districts

**11** Professional Development Snapshot

**12** Alignment with NMPED Strategic Pillars

**13-14** 2022-2023 Highlights

**15** Services & Technical Assistance - Statewide

**16-17** Fiscal Overview

**18** Procurement





# Introduction

High Plains Regional Education Cooperative (HPREC), located in Raton, New Mexico, is one of ten regional education cooperatives throughout the state. HPREC is a New Mexico State agency, administratively attached to the Public Education Department (New Mexico Statute Article 2B– 22– 2B–1 to 22–2B–5).

HPREC's role is to augment and accelerate the efforts of its eight member school districts by providing quality support and services, in response to current school needs and initiatives. This is done with a cooperative system of sharing services and leveraging programs.

## Mission

Our mission is to research and implement sound educational practices in order to be responsive to client needs. We do this by engaging in research-based practices, developing relationships, and implementing systems to transform education. We do this so that all our schools are successful.

## Vision

We envision a collaborative culture where people are valued and encouraged to grow professionally in a positive working environment, which fosters innovation in a progressive attempt to transform education and provides our schools with high quality, research-based educational opportunities to improve outcomes.

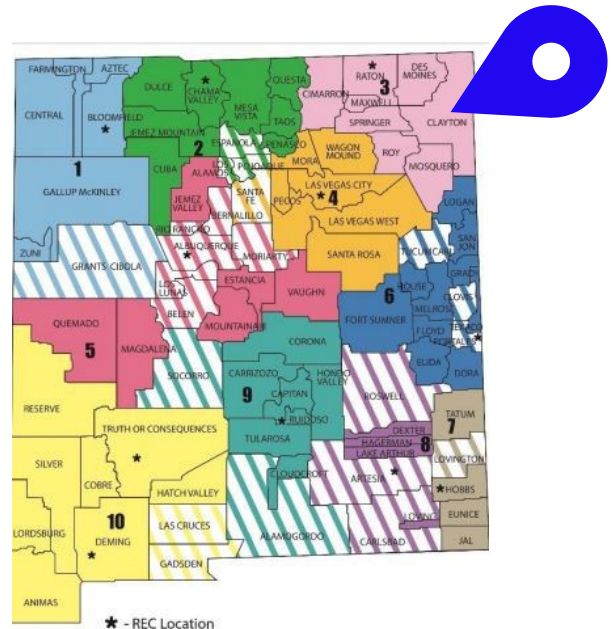
## Location

101 North 2nd Street  
Raton, NM 87740  
Phone - 575-445-7090  
FAX - 575-445-7663  
[www.hprec.com](http://www.hprec.com)

## NMRECA

The New Mexico Regional Education Cooperatives Association (NMRECA) is comprised of ten regional education cooperatives. We are located throughout New Mexico, supporting 68 districts (most of them rural), charter schools, and state-supported schools. In addition, NMRECA members work directly with the New Mexico Public Education Department on state-wide projects and initiatives.

Learn more about the NMRECA by visiting our website: [www.nmreca.org](http://www.nmreca.org)



---

## Board of Directors

High Plains Regional Education Cooperative is governed by an eight-member board which consists of the superintendent from each member district. The superintendents meet regularly to provide guidance and expertise to the Executive Director. The strength of HPREC lies in the collaborative and supportive construct of the organization.

The public is invited to attend HPREC Board of Directors' meetings. Meeting times, agendas, and minutes can be found on our [website](#).

President - Kodi Sumpter, Des Moines Municipal Schools

Vice-President - Adan Estrada, Cimarron Municipal Schools

Secretary - Kristie Medina, Raton Public Schools

Member - Ray Maestas, Clayton Municipal Schools

Member - Amy Roble, Maxwell Municipal Schools

Member - Johnna Bruhn, Mosquero Municipal Schools

Member - Lee Fluhman, Roy Municipal Schools

Member - Gary Allison, Springer Municipal Schools

---

## HPREC Staff

Executive Director - [R. Stephen Aguirre](#)

Business Manager - [Mary Lisa Gonzales](#)

Program Manager - [Marisa Aguirre](#)

Business and Program Support/CPO - [Brandon Hightree](#)

Administrative Assistant - [Emy Carlini](#)

Procurement Consultant - [Gary Gabriele](#)

Program Specialist/Dossier Reviewer - [Pamela Hunnicutt](#)

Licensed Clinical Social Worker - [Jill Fernandez](#)

Special Education Consultant - [Pepper Skodack](#)

IT Contractor - [Richard Nunez](#)

---

*Do the best you can until you know better.  
Then when you know better, do better.  
- Maya Angelou*



---

## Message from the Executive Director

It is my pleasure to share the Annual Report for High Plains Regional Education Cooperative (HPREC). 2022-2023 marks my twenty-fifth year in the role of Executive Director at High Plains REC. It continues to be my honor to be a member of this team of dedicated educators throughout our region.

To maintain our high standards of providing exceptional services, we remember that we are learners, too. As learners, we continue to be reflective in our work.

HPREC's leadership and innovation are timely in meeting the needs of students and staff in the Cimarron, Clayton, Des Moines, Maxwell, Mosquero, Raton, Roy, and Springer School Districts. The collective and collaborative initiatives and projects provided by HPREC are essential to our small and rural districts.

HPREC provides expertise, technical assistance, and systematic approaches to our member districts to increase student learning outcomes. We support efforts and identify resources to address all student needs, with a focus on the at-risk student population, graduation rates, and college and career readiness.

Recognizing the many fiscal challenges in public education, HPREC engages in entrepreneurial activities to ensure financial stability. Sound business practices including pre-bid contracts, an annual SPED law conference, and the facilitation and coordination of statewide professional development via the IGA process, are examples of HPREC's commitment to fiscal solvency.

As always, there is a tremendous amount of positive momentum within HPREC and its member districts, building on our 37 year history and reputation of quality and professionalism. I invite you to learn more about HPREC's 22-23 projects and accomplishments, as detailed in this annual report.

Helen Keller once stated, "Optimism is the faith that leads to achievement." As we embark on the 2023-2024 school year, I look forward, with optimism, to the many successes that our districts will have, with the support of HPREC.

Respectfully,

*R Stephen Aguirre*

---

### Funding

Each REC in the state receives an annual legislative allocation of \$110,000. To maintain financial solvency, HPREC primarily relies on innovative and successful entrepreneurial activities.

0 %

member district fees  
charged

HPREC does not charge a fee to member districts.

## Member District Contact Information

District	Superintendent	Website
Cimarron Municipal Schools	Adan Estrada	<a href="http://www.cimarronschools.org">www.cimarronschools.org</a>
Clayton Municipal Schools	Ray Maestas	<a href="http://www.claytonschools.us">www.claytonschools.us</a>
Des Moines Municipal Schools	Kodi Sumpter	<a href="http://www.desmoines.k12.nm.us">www.desmoines.k12.nm.us</a>
Maxwell Municipal Schools	Amy Roble	<a href="http://www.maxwellp12.com">www.maxwellp12.com</a>
Mosquero Municipal Schools	Johnna Bruhn	<a href="http://www.mosquero.net">www.mosquero.net</a>
Raton Public Schools	Kristie Medina	<a href="http://www.ratonschools.com">www.ratonschools.com</a>
Roy Municipal Schools	Lee Fluhman	<a href="http://www.royschools.org">www.royschools.org</a>
Springer Municipal Schools	Gary Allison	<a href="http://www.springerschools.org">www.springerschools.org</a>

### 4-Year Cohort Graduation Rate by District\*

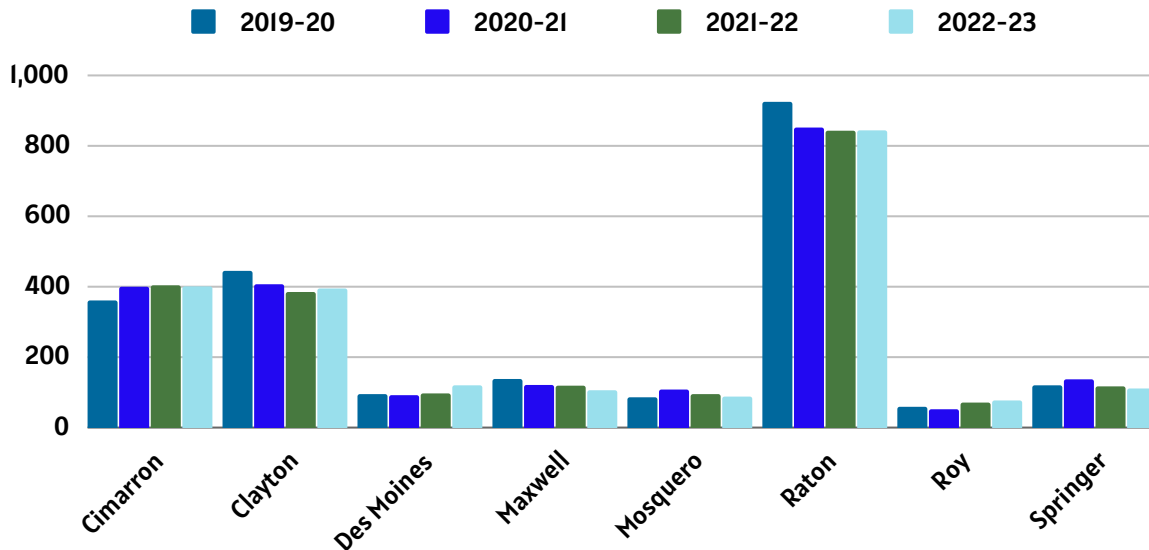
District	2019	2020	2021	2022
Cimarron	81.5%	70.8%	91.4%	68.9%
Clayton	-	87.2%	75.0%	86.6%
Des Moines	-	-	≥ 95%	-
Maxwell	-	-	90.0%	≥ 80%
Mosquero	-	93.0%	≥ 95%	-
Raton	79.4%	84.5%	74.8%	77.0%
Roy	-	-	73.3%	-
Springer		92.6%	≥ 95%	78.9%
Statewide	74.9%	76.9%	76.8%	76.2%

\*2022 NMPED Graduation Data  
(-) Data not available

# Member District Data

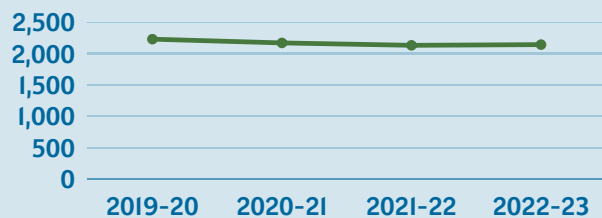
## Student Enrollment by District 2020-2023\*

District	2019-20	2020-21	2021-22	2022-23
Cimarron	361	400	404	401
Clayton	445	407	385	395
Des Moines	95	92	97	120
Maxwell	138	121	119	106
Mosquero	86	108	95	88
Raton	925	852	843	844
Roy	59	52	71	77
Springer	120	137	117	111
Total	2229	2169	2131	2142



# 4%

decrease in region-wide  
enrollment over four year span

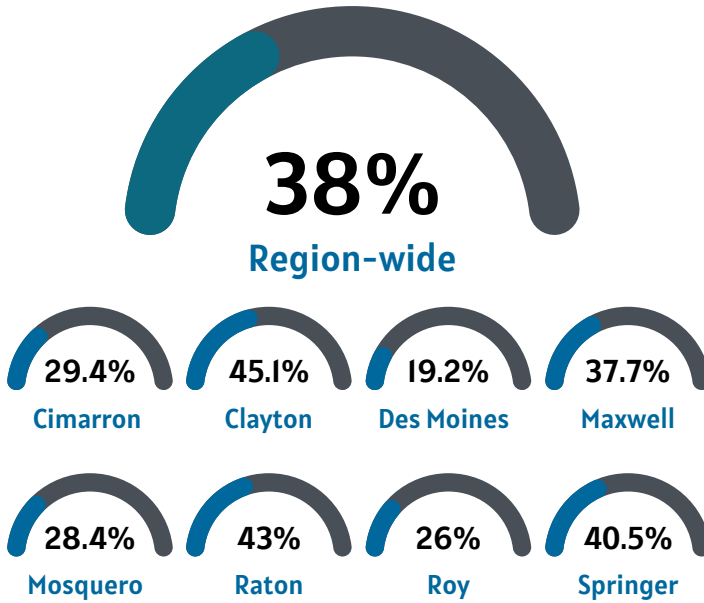


\*2022-2023 40 Day Count STARS Data as Reported by NMPED

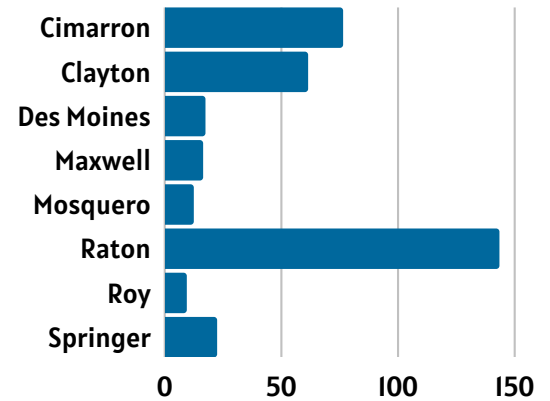


## Member District Data (continued)

### Percent Economically Disadvantaged\*



### Number of Students Enrolled in Special Education\*



### Number/Percent of Students Qualifying for Free/Reduced Lunch (FRL)\*

District	Total FRL Students	Percent FRL Students
Cimarron	241	60.1%
Clayton	275	69.6%
Des Moines	53	44.2%
Maxwell**	106	100%
Mosquero	40	45.5%
Raton	363	43.0%
Roy	42	54.5%
Springer**	111	100%
Region	1231	57.5%

\*2022-2023 40 Day Count STARS Data as Reported by NMPED

\*\*Community Eligibility Program (CEP) Recipient

## Services & Technical Assistance - Member Districts

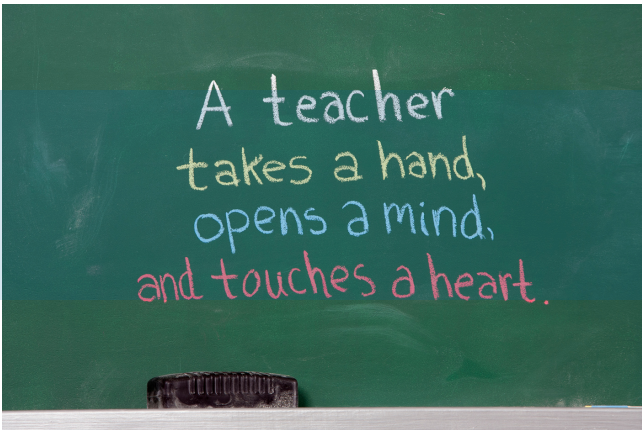
HPREC works closely with its member districts to provide and/or facilitate support and technical assistance in accordance with, and pursuant to, the Joint Powers Agreement, to assist districts in achieving their goals. See below for a sampling of 2021-2022 supports.

Crisis Prevention Institute	HPREC staff (LCSW) provides ongoing training and recertification to staff across the region in Crisis Prevention Intervention (CPI). (The LCSW is CPI certified and is also available for consultation and assistance in the design of safety teams and safety plans.) HPREC also provides CPI materials and online resources.
Community Outreach	HPREC hosts member districts, community groups, partner RECs, and various other organizations with interests in education and community development. Available facilities include two training rooms (one that accommodates up to 12 and another that can accommodate up to 50).
Dossier Support	Dossier support is available to teachers throughout the dossier design and submission process. Coaching includes helpful tips and ongoing discussion about completeness and thoroughness of each strand.
Instructional Resources	HPREC provides instructional resources to districts, upon request. Examples include those that address secondary literacy (Achieve3000) and K-6 reading and math (Curriculum Associates i-Ready).
Multi-Layered System of Support (MLSS)	In response to NMPED guidance, HPREC provides expertise and support to our districts during the transition from RTI to MLSS. Teams from throughout the region meet regularly with the MLSS coach, assuring that information is received and that timelines are met.
Professional Learning Communities	Leaders from throughout the region have spearheaded the reorganization of the Professional Learning Communities initiative. HPREC assists with the facilitation of team meetings and by providing resources, including access to HPREC's subscription to Solution Tree.

# Services & Technical Assistance - Member Districts (continued)

HPREC works closely with its member districts to provide and/or facilitate support and technical assistance in accordance with, and pursuant to, the Joint Powers Agreement, to assist districts in achieving their goals. See below for 2021-2022 supports.

Positive Behavior Intervention Support (PBIS)	HPREC staff (LCSW) provides professional development in PBIS, a systems-level approach to promote positive behavior and healthy social development in children. The support also includes the purchase of materials and licensing of PBIS Rewards, which is a data tracking resource to monitor the effectiveness of the PBIS implementation.
Student Assistance Team (SAT)	HPREC staff is available to assist with school-level Student Assistant Teams (SAT). This includes process guidance, especially as the NMPED has revised/redesigned form exemplars, for district use.
Technology	The IT team is available to districts for needs assessments, strategic planning, and consultation on all technology related issues.





## Services & Technical Assistance - Member Districts - Special Education

HPREC works closely with its member districts to provide and/or facilitate support and technical assistance in accordance with, and pursuant to, the Joint Powers Agreement, to assist districts in achieving their goals. See below for 2021-2022 supports for Special Education.

Child Find	HPREC provides assistance with the scheduling, promotion, staffing, and materials to ensure that Child Find events are successful and meet IDEA guidelines.
Consultant	A Special Education consultant is available to provide ongoing support to Special Education Directors, Related Service Providers, and HPREC staff to address goals, activities, measurements, and documentation for IEP students and to ensure compliance with IDEA.
Continuing Education	HPREC coordinates continuing education in the area of Special Education, upon request by district. This includes materials, professional development, and online learning, such as DirectStep for paraprofessionals (LRP).
GoalBook	GoalBook is available to member districts. GoalBook is an online resource that assists related service providers and special education personnel in developing meaningful and robust IEP goals that are directly aligned with the CCSS.
LRP Publications	LRP Publications (Special Education Connections) is available to member district staff. This valuable web-based resource provides access to an online newsletters that provide the latest in Special Education legal matters and trends.
Medicaid School Based Services (MSBS)	HPREC coordinates and oversees the MSBS program for member districts, overseeing both the direct billing and the administrative claim process.
PowerSchool Special Programs (PSSP)	PowerSchool Special Programs is available as the IEP system for the region. RTI, 504, and Service Capture modules are integrated in the system. HPREC staff provides technical and content expertise, along with ensuring system access and monitoring upgrades.

# Services & Technical Assistance - Member Districts - Special Education (continued)

HPREC works closely with its member districts to provide and/or facilitate support and technical assistance in accordance with, and pursuant to, the Joint Powers Agreement, to assist districts in achieving their goals. See below for 2022-2023 supports for Special Education.

Related Service Providers	HPREC employs and contracts with Related Service Providers, as availability permits. In addition, HPREC assists districts with their RSP employees and contractors, providing testing materials upon request and training on appropriate service documentation.
Walsh-Gallegos Law Firm	HPREC coordinates monthly roundtables with the Walsh-Gallegos Law Firm, centered on hot topics in Special Education. In addition, HPREC works with the law firm to provide annual updated policies and procedures and professional development, as identified.

### Special Education Law Conference



Year	Attendance
2018	190
2019	185
2020	235
2021	265
2022	255

17

consecutive years of delivery

Each year, HPREC presents the Special Education Law Conference. 2022 was the 17th consecutive year, with the last four years held remotely

Presenters are from the Walsh-Gallegos Law Firm. The attorneys are highly knowledgeable and respected experts in the field of special education law.

Designed for New Mexico school districts and charter schools, the topics cover the most up-to-date and accurate information regarding IDEA 2004 and issues related to case law, practical compliance strategies, and trends in litigation.

---

# Professional Development

HPREC conducts and facilitates professional development activities that positively impact hundreds of administrators, teachers, support staff, and students in New Mexico each year. Much of the professional development is provided through IGAs with the NMPED; others are specific to HPREC. All professional development activities are designed to build capacity and expertise at the local level through workshops, as well as ongoing coaching, mentoring, and technical assistance. The goal is to increase educator effectiveness and student achievement. Here is a sampling of the focus areas relating to the professional development delivered during 2022-2023:

- At-Risk Intervention Response
- Black Education Act
- Bilingual and Multicultural Education
- Bus Driver Training
- Business Software (Visions)
- College and Career Readiness
- Common Core State Standards
- Crisis Prevention Intervention
- Critical Thinking
- Cultural Responsiveness
- Data-Based Decision Making
- Dossier Support
- Dyslexia
- Equity Councils
- Hispanic Education Act
- Instructional Materials
- Instructional Strategies & Teacher Effectiveness
- Leadership
- Literacy
- Mathematics & Science
- Medicaid School Based Services
- Multi-Layered System of Supports/Student Assistance Teams
- Paraprofessionals (Continuing Education)
- Policy Development & Review
- Positive Behavior Intervention Support
- PowerSchool Special Programs
- Professional Learning Communities
- Short Cycle Assessments
- Social & Emotional Learning
- Special Education Law/Compliance/504
- State Performance Plan Indicators
- Technology



---

# Alignment with NMPED Strategic Pillars

*...partnering with NMPED to ensure that all students have access to a quality education*

---



## Close the Opportunity Gap

*The Board of Directors works collaboratively with the Executive Director to identify annual goals and focus areas. Technical assistance, resources, and evidence-based learning opportunities are available to all and allocated according to the highest need. This process is dynamic in its construct, building on the diverse needs of students and staff. This inclusive approach is supported by decision making that is informed by current data.*

---



## Develop Pathways & Profiles of a NM Graduate

*HPREC is committed to supporting district efforts to ensure that all students have the necessary support and opportunities to succeed in both their educational journey and future careers. This commitment involves a focus on career preparation through CTE experiences and helping students overcome academic challenges through credit-recovery programs.*

---



## Promote a Vibrant Educator Ecosystem

*HPREC works closely with the Board of Directors and member district staff supporting a wide-range of professional development (PD) for educators. HPREC targets its efforts and resources in response to specific needs, adapting to the evolving and complex needs of students. The PD offerings are designed to help educators improve their skills and delivery or classroom instruction.*

---



## Support the Whole Child

*Member districts work collaboratively with HPREC to support the diverse needs of students, improve educational outcomes, and create a more inclusive and supportive learning environment. The implementation of initiatives and development of frameworks such as Crisis Prevention (CPI), Positive Behavioral Interventions and Support (PBIS), and Culturally and Linguistically Responsive Teaching (CLR) assist member districts in these efforts.*

## Highlights



### Call Center

- HPREC worked with developers to contract and launch the NMPED Education Technology Call Center (ETCC)
- The ETCC provided technology support to students, families, and staff from all public schools and charter schools across the state
- The project included training students as call center staff as well as establishing drop-off depots in Albuquerque, Las Cruces, and Santa Fe



### FIPSE Federal Grant - Year 3

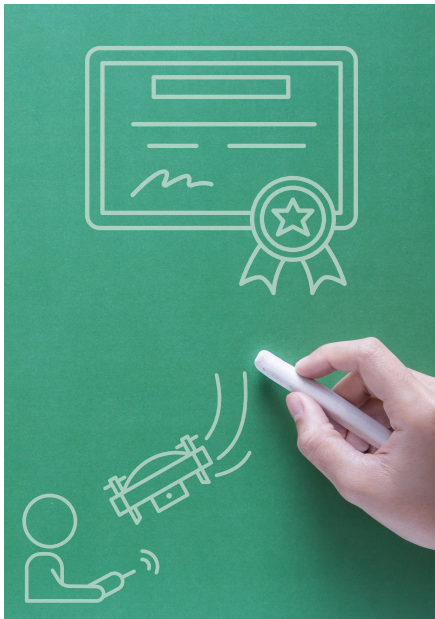
Year 3 updates:

- Continued development of the Pathway2Careers (P2C) career-focused math curriculum (Pre-Algebra, Algebra I, and Geometry), including Spanish translations
- Creation of course sequences and mobile lessons centering around financial literacy
- Published online module and recorded interviews featuring the top 50 occupations, represented by voices within the state



*Excellence in Education*

## Highlights (continued)



### Career Technical Education

Program offerings were in the areas of Construction Trades, FAA Unmanned Drone Piloting, and Wind Energy with partners Mesalands Community College, New Mexico Construction Building Trades and Del Sol Aviation. Below are some highlights of the programs:

- FAA Unmanned Drone Pilot Certification - 18 students received their FAA industry certification upon successful test completion
- Mixed Construction Trades - 14 students received industry recognized certifications in MC3 Apprenticeship Readiness, OSHA 10 and First Aid/CPR
- Wind Energy - 15 students obtained their industry recognized International Renewable Energy Technician Occupational certifications

\*Augmented Reality Welding Systems were rotated throughout consortium district classrooms in New Mexico Workforce Region C

### Summer K-6 Reading Program

HPREC provides all K-6 students from throughout the district with summer reading material. Students enjoy the tote that includes five grade-level fiction books and a fun comprehension check. Parents and teachers appreciate the efforts to address summer reading loss.



# 1,053

K-6 summer  
reading packages  
distributed





## Services & Technical Assistance - Statewide

HPREC's work with the New Mexico Public Education Department regarding coordination and facilitation of professional development on a state-wide level continues to grow each year. A broad range of support is outlined in the Inter-Governmental Agreements with NMPED Divisions and Bureaus and includes areas such as contract development, fiscal management, RFPs, and event facilitation.

NMPED - Black Education Act	<ul style="list-style-type: none"> <li>• At-Risk Intervention Response Team</li> <li>• Black Education Professional Development/Training</li> </ul>
NMPED - College and Career Readiness Bureau	<ul style="list-style-type: none"> <li>• Career Advisement/Counseling</li> <li>• Career Technical Education</li> <li>• Early College High Schools</li> </ul>
NMPED - Hispanic Education Act	<ul style="list-style-type: none"> <li>• Hispanic Education Professional Development/Training</li> </ul>
NMPED - Instructional Material Bureau	<ul style="list-style-type: none"> <li>• Summer Review Institute</li> </ul>
NMPED - Language and Culture Division	<ul style="list-style-type: none"> <li>• Culturally and Linguistically Responsive Teaching and Learning</li> <li>• Equity Council Meetings</li> <li>• Title III</li> <li>• WIDA</li> <li>• World Language Standards</li> </ul>
NMPED - Math & Science Bureau	<ul style="list-style-type: none"> <li>• OpenSciEd</li> <li>• Focus on Algebra</li> <li>• Math Pathways</li> <li>• Early Numeracy</li> </ul>
NMPED - Priority Schools Bureau	<ul style="list-style-type: none"> <li>• Regional Support Specialists</li> </ul>
NMPED - Special Education Division	<ul style="list-style-type: none"> <li>• State Level Activity J (ex, State Performance Plans, Early Learning, Graduation Rates)</li> <li>• State Level Activity M (Educator Evaluation, Common Core)</li> </ul>

# Fiscal Overview

## Support to Member Districts by HPREC Fiscal Department

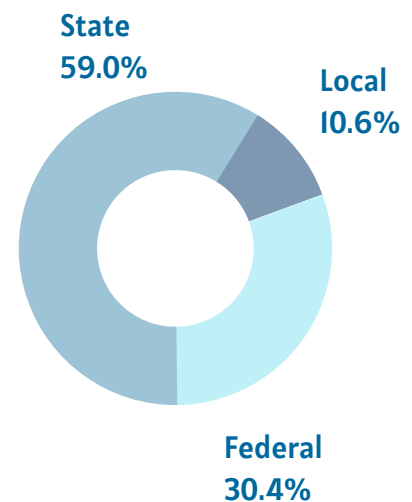
- Training and support of school-based business managers
- Preparation and facilitation of operating budgets
- Administration of budget compliance and accountability
- Responsible for submission of timely reporting
- Financial liaison with the New Mexico Public Education Department

## Financial/Operational Highlights 2022-2023

- Ending cash balance of June 30, 2022 - \$3,115,966
- Intergovernmental Receivables - \$1,764,628
- Overall revenue (including transfers in and other sources) - \$9,710,779
- Total expenditures - \$9,614,163
- Net Position - \$1,323,315 increase
- Fund Balance - \$96,616 increase

## 2022-2023 Governmental Activities Revenue (Audited)

Revenue Source	Amount	Percentage
Federal Sources	\$2,952,757	30.4%
State Sources	\$5,729,860	59.0%
Local Sources	\$1,028,162	10.6%
Total Revenue	\$9,710,779	100%



# Fiscal Overview (continued)

## 2022-2023 Governmental Activities Outlays/Expenditures (Audited)

	Outlays/Expenditures	Amount
Current	Instruction	\$61,357
	Support Services: Students	\$496,662
	Support Services: Instruction	\$6,735,769
	Support Services: General Administration	\$2,068,621
	Support Services: Central Services	\$142,909
	Operation & Maintenance of Plant	\$108,845
	Community Services Operations	\$0
Non-Current	Debt Principal	\$0
	Debt Interest	\$0
	Capital Outlay/Other Support Services	\$0
	<b>Total Outlays/Expenditures</b>	<b>\$9,614,163</b>

## Summary of Revenue: Governmental Activities (Audited)

Source	2020	2021	2022	2023
Federal Sources	\$769,266	\$2,410,768	\$4,939,266	\$2,952,757
State Sources	\$4,029,060	\$7,192,680	\$4,935,330	\$5,729,860
Local Sources	\$981,714	\$1,614,802	\$1,235,226	\$1,028,162
<b>Total</b>	<b>\$5,780,040</b>	<b>\$11,218,250</b>	<b>\$11,109,822</b>	<b>\$9,710,779</b>

## Procurement – Pre-Bid Contracts

High Plains Regional Education Cooperative #3 is partnered with professional and reputable contractors providing pre-bid contracts for school districts, state agencies, and local public bodies, pursuant to NMSA 1978, 13-1-129, Procurement Under Existing Contracts.

<b>bulb, Inc. – Digital Portfolios</b> 400 East Simpson Street Suite 230 Lafayette, CO 80026 303-522-6972	<b>Government &amp; Educational Furnishings Company (GEFCO)</b> 7324 Vista de Sobre Dr Las Cruces, NM 88012 575-382-5639	<b>Hertz Furniture</b> 6821 Fulton Street Houston, TX 77022 817-501-9411
<b>Nunex Enterprises</b> PO 592 Santa Teresa, NM 88008 505-207-0955	<b>School Furnishings Unlimited</b> PO Box 14278 Albuquerque, NM 87191 505-797-5179	<b>STOVEN Construction</b> 2709 Vassar Place NE #F Albuquerque, NM 87107 505-884-7550
<b>Weil Construction, Inc.</b> 3344 Princeton Drive NE Albuquerque, NM 87107 505-889-3535	<b>Woodcraft</b> 6230 N Oracle Road #100 Tucson, AZ 85704 520-742-9663	<b>\$0</b> cost/fees for districts to utilize pre-bid agreements

**9**

available vendors for districts in 2022-2023

**2%**

administrative fee on all pre-bid contract usage supports HPREC districts

---

## Next Steps

There are several exciting projects and work ahead for 2023-2024. We look forward to sharing our progress with you next year.

Thank you for your continued support of High Plains REC and RECs across the state.



101 North 2nd Street  
Raton, NM 87740  
Phone - 575-445-7090  
FAX - 575-445-7663  
[www.hprec.com](http://www.hprec.com)

